

STINGA NGN MONITOR

EXTREMELY COST-EFFICIENT
WORLD CLASS SUPPORT
VERY EASY TO USE
VERY PORTABLE



LOSING CUSTOMERS AND MONEY?

INEFFICIENT NETWORKS OR PROJECTS MIGHT BE THE REASON.

**WHETHER YOU'RE INTO MOBILE, VOIP, PSTN, OR ISDN BUSINESS,
GET ON TOP OF YOUR PROBLEMS NOW!**



Your customers will notice

STINGA NGN APPLICATION AREAS AND OVERVIEW



IMPROVED BUSINESS WITH LOW COST SOLUTIONS

- ◆ Helps you to satisfy your customers by improving Quality of Services in your network
- ◆ Helps you to get the most out of your existing investments in your network
- ◆ Generate reports for your telecommunication authorities
- ◆ Get your development and test projects finished on schedule
- ◆ Helps you to reduce Time To Market (TTM)
- ◆ Resolve your network problems before your customers even notice
- ◆ No 1st or 2nd line support anymore, you have 3rd line support directly by world class specialists
- ◆ Tailor made solutions in just a few days
- ◆ Training available by some of the most experienced and skilled specialists in Norway

NETWORK MANAGEMENT

- ◆ Know the capabilities of your network
- ◆ Easily generate reports for your executives
- ◆ Resolve network issues easily
- ◆ Tune up your network for better performance
- ◆ Quality of Service & Network Performance analysis: From CDRs (call detail records) generated by the protocol analyser, it is easy to generate different statistics reports presenting QoS and NP parameters.



FAULTFINDING & TROUBLESHOOTING

- ◆ Protocol decoding of all user parts and protocol layers makes it possible to track and search for protocol irregularities.

KEY FEATURES

- ◆ NGN protocol analysis/monitoring
- ◆ SIP CDR Builder
- ◆ Runs on standard PCs with Windows and an Ethernet interface (no custom hardware needed)
- ◆ Upgradeable to NGN protocol simulation:
 - STINGA SS7 Simulator – SS7oIP through M3UA/SCTP
 - STINGA SIP Simulator



OVERVIEW

Components

The cost-efficient STINGA test instruments from Utel Systems comprises the following components related to NGN protocol analysis:

- ◆ One or more software modules: STINGA NGN Monitor for protocol analysis
- ◆ One USB dongle working as a hardware lock.

Highly Portable

With these hardware and software components, highly portable protocol simulators and analysers, desktop protocol simulators and analysers, and rack-based monitoring probes are supported.

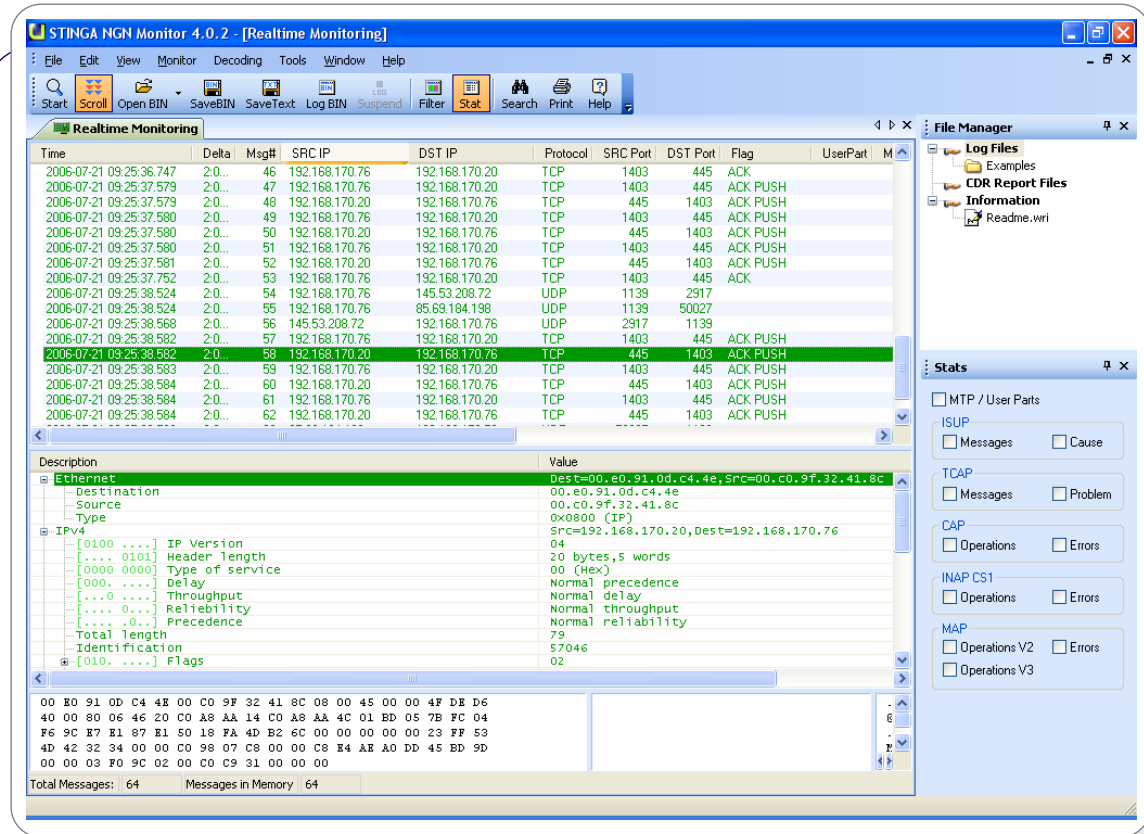
Cost-efficient Windows-based Test Instruments

All software and hardware components are running on standard notebook and desktop PCs with Windows, providing cost efficient IT service, fast learning curve, easy and cheap access to replacement units.

Same User Interfaces for all Products Reduce Costs

All test instruments from Utel Systems are based on the same windows user interface framework. The user do not have to focus on how to use different applications, meaning full focus on different protocols and network technologies in use. Same decoding format for monitor and simulator results in time efficient testing.

STINGA NGN PROTOCOL MONITORING & ANALYSIS



Protocol Monitoring

The supported protocols are decoded down to a detailed level. Fields pointed on in the detailed decoding are highlighted in the hex window. Hex messages imported from other systems can be decoded

Comprehensive decoding of IP/TCP/UDP/SCTP protocols, and applications like Megaco, MGCP, SNMP, SIP and DNS. Decoding of SS7oIP inclusive MTP, ISUP (v1, 2, 3 and 4), TUP, SCCP, TCAP, INAP, MAP (v3), CAP and IS-41 is provided.

A monitored signalling sequence can be stored on hard disk either as screen dumps (ASCII or HTML) holding the complete detailed decoding, or binary files. The stored information can be retrieved at any time using the same monitor or an ASCII/HTML editor.

Long term monitoring by automatic storage to hard disk is also possible. The amount of information that can be collected is only limited by the size of the hard disk. To find errors and signalling problems, just search for a text string.

Protocol Analysis

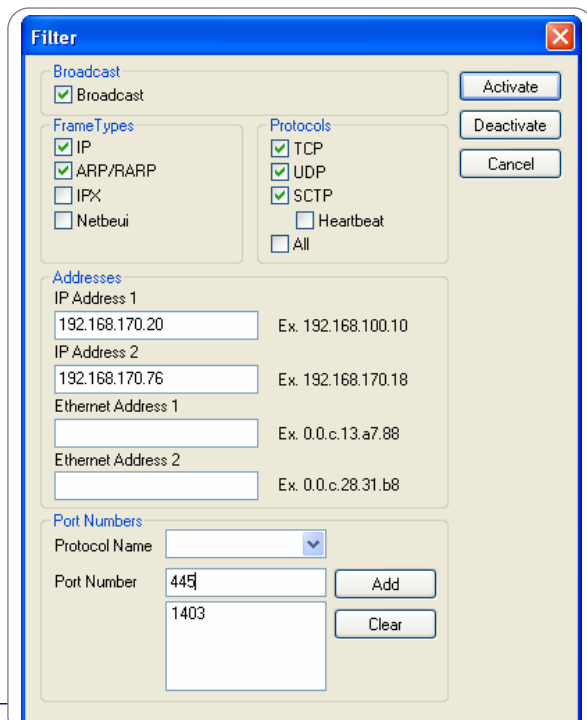
The STINGA NGN Monitor includes filtering options for:

- ◆ Ethernet addresses
- ◆ IP addresses
- ◆ IP, ARP/RARP
- ◆ TCP, UDP, SCTP (with heartbeat)
- ◆ Ports (like SIP, Megaco, DNS, M3UA, SUA etc.)

The included filters are very easy to set up.

Easy to use Windows-based user interfaces. CDR files and log files etc. are easily accessed from the Simulator Files pane to the right.

CDR functionality is included. CDRs can be built on SIP, Megaco and SS7oIP. If SS7oIP is carried by M3UA, M2UA or SUA, CDRs can be built and Quality of Service reports can be generated



STINGA NGN PROTOCOL ANALYSER

TECHNICAL SPECIFICATIONS

Hardware & Software Requirements

- ◆ Software modules runs on Windows Vista/XP/2003 Server/2000/NT 4.0.
- ◆ WinPcap 3.1 or newer
- ◆ Any Network Interface Card (NIC) providing a standard Ethernet interface.

Protocols Supported

- ◆ Ethernet
- ◆ IP, ICMP
- ◆ TCP, UDP, SCTP
- ◆ DNS, NetBIOS, SNMP
- ◆ RTP, RTCP
- ◆ SIGTRAN (SCTP, M2PA, M2UA, M3UA, SUA, IUA, V5UA)
- ◆ SIP, SDP
- ◆ SIP-T (ITU ISUP, ANSI ISUP, UK ISUP, BICC)
- ◆ Megaco/H.248
- ◆ MGCP
- ◆ SS7oIP
 - MTP (ITU, ANSI, Japan TTC, Chinese) - Message Transfer Part
 - SNM - Signalling Network Management
 - SMH - Signalling Message Handling
 - ISUP (ITU, ANSI, UK, Japan TTC) - ISDN User Part
 - BICC - Bearer Independent Call Control
 - TUP (ITU, Chinese)- Telephone User Part
 - IUP (British Telecom TUP)
 - SSUTR2 (French TUP)
 - SCCP (ITU, ANSI, Japan TTC, Chinese) - Signalling Connection Control Part
 - TCAP (ITU, ANSI) - Transaction Capabilities Application Part
 - INAP - Intelligent Network Application Part:
 - Ericsson Core INAP
 - Alcatel Core INAP
 - INAP CS1
 - INAP CS2

- SINAP5 & SINAP7
- Ericsson INAP CS1+
- Alcatel INAP CS1+
- British Telecom INAP CS1+
- Ericsson Light Weight INAP
- MAP - Mobile Application Part
- SMS - Short Message Service
- CAP - CAMEL Application Part
- IS-41/ANSI-41, IS-826, IS-848
- Supplementary Services

- ◆ Other protocols and national protocol variants are implemented on customer requests.

Related Products

- ◆ STINGA BICC Monitor & Simulator
- ◆ STINGA DPNSS/DASS2 Monitor
- ◆ STINGA IRI Analyser
- ◆ STINGA ISDN PRA Monitor & Simulator
- ◆ STINGA ISDN BA Monitor & Simulator
- ◆ STINGA MEGACO Monitor & Simulator
- ◆ STINGA MOBILE Monitor
- ◆ STINGA PNNI Monitor & Simulator
- ◆ STINGA SCTP Simulator
- ◆ STINGA SIP Simulator
- ◆ STINGA SS7 Monitor & Simulator
- ◆ STINGA V5 Monitor & Simulator
- ◆ E1/T1/J1 support for Wireshark (Ethereal)

Note: The **BICC** products includes all the functionality of the SS7 products, in addition to support for the BICC protocol. The SS7 test instruments can easily be upgraded to the BICC products.

Manufacturer

Utel Systems AS
Televeien 9, NO-4879 Grimstad, Norway
Main Office: Tel: +47 3704 6192 • Fax: +47 3704 6191
Internet: www.utelsystems.com
E-mail: sales@utelsystems.com

Distributor

Please contact us for information about your local distributor.
A distributor overview is also available at our web site.



Your customers will notice

Specifications and descriptions in this document are subject to change without prior notification.

The Utel Systems name and logo are registered trademarks of Utel Systems.

All other trade names referenced are the service marks, trademarks or registered trademarks of their respective companies.