

# STINGA ISDN BA MONITOR

EXTREMELY COST-EFFICIENT  
WORLD CLASS SUPPORT  
VERY EASY TO USE  
VERY PORTABLE



GAIN CUSTOMERS AND MONEY  
BY IMPROVING YOUR NETWORKS AND PROJECTS

WHETHER YOU'RE INTO MOBILE, VOIP, PSTN, OR ISDN BUSINESS,  
GET ON TOP OF YOUR PROBLEMS NOW!



Your customers will notice

# STINGA ISDN BA APPLICATION AREAS



## IMPROVED BUSINESS WITH LOW COST SOLUTIONS

- ◆ Get your development and test projects finished on schedule
- ◆ Helps you to reduce Time To Market (TTM)
- ◆ No 1st or 2nd line support anymore, you have 3rd line support directly by world class specialists
- ◆ Tailor made solutions in just a few days
- ◆ Training available by highly experienced and skilled protocol and signalling specialists

## KEY FEATURES

- ◆ ISDN BA protocol analysis/monitoring
- ◆ Monitoring up to eight ISDN BRI TE/NT interfaces
- ◆ Audio support

## OVERVIEW

### Components

The cost-efficient STINGA ISDN BA test instruments from Utel Systems comprises the following components:

- ◆ The PIST-ISDN-BRI USB for connection to the S-bus
- ◆ Software module:
  - ISDN BA Monitor for protocol analysis

### Highly Portable

"All-in-one" instrument with many applications in one notebook. With these hardware and software components, highly portable protocol simulators and analysers, desktop protocol simulators and analysers, and rack-based monitoring probes are supported.

### Cost-efficient Windows-based Test Instruments

All software and hardware components are running on standard notebook and desktop PCs with Windows, providing cost efficient IT service, fast learning curve, easy and cheap access to replacement units.

### Same User Interfaces for all Products Reduce Costs

All test instruments from Utel Systems are based on the same windows user interface framework. The user do not have to focus on how to use different applications, meaning full focus on different protocols and network technologies in use. Same decoding format for monitor and simulator results in time efficient testing.



# STINGA ISDN BA PROTOCOL ANALYSIS

## ISDN BA MONITOR - PROTOCOL ANALYSIS

### Real-Time Decoding

Comprehensive real-time decoding of the ISDN protocols is provided. Customer configured one-line decoding, detailed decoding and hex information are displayed. Physical link status is displayed with indicators in the status bar and layer 1 alarms are printed in the one-line decoding window.

### Filter Mechanisms

Different filter mechanisms are supported.

### Search

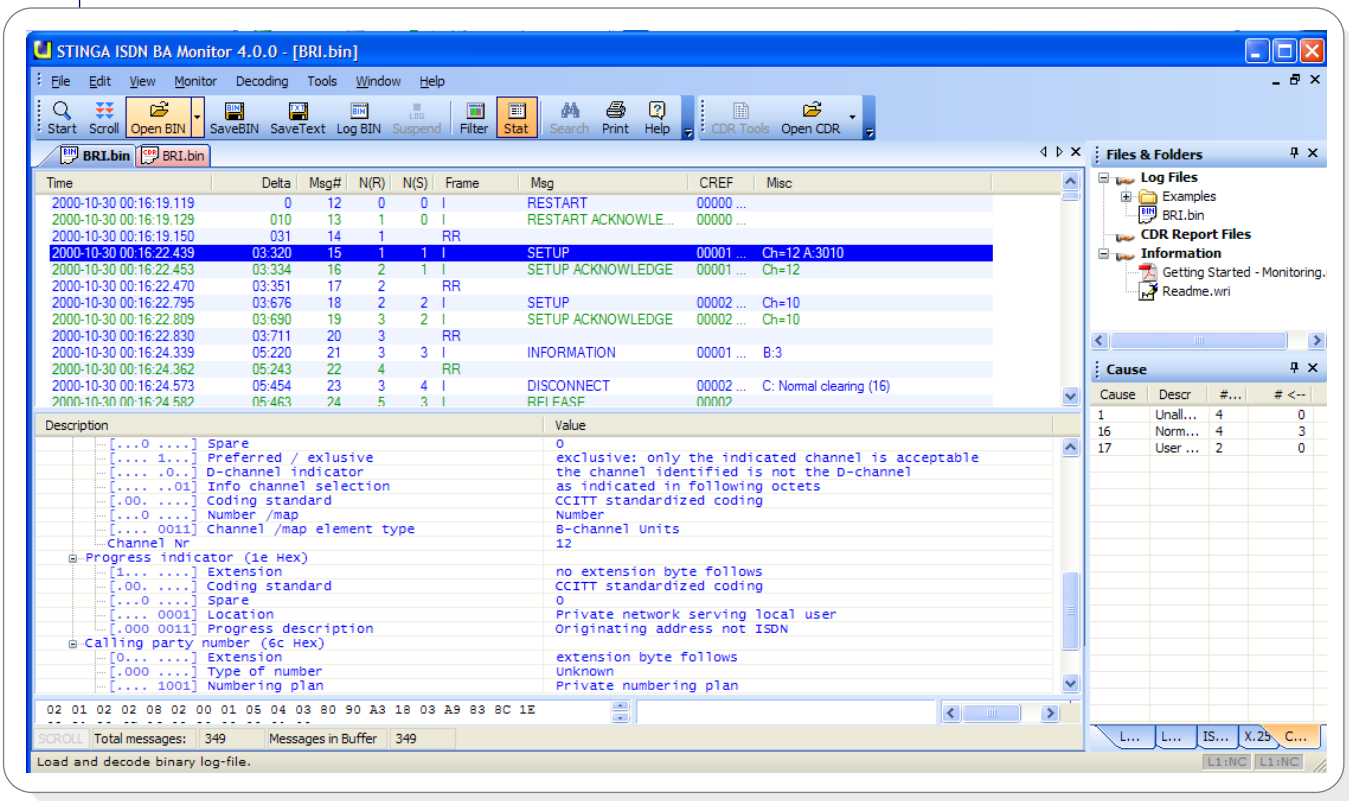
It is possible to search for information in all captured messages, and it is also possible to specify which columns in One-Line Decoding to search.

### Decode Single Message

With the Decode Single Message feature, it is possible to import protocol information on hex format to get it detailed decoded. This protocol information could be some messages captured by a 3rd-party analyser that you for example have received by e-mail.

### Remote Control

The monitor application is constructed to be remotely controlled over a IP connection (like a dial-up connection). The graphical user interface is installed on a local PC, while the monitor "agent" is running on a remote PC connected to the tapping point through the hardware.



Easy to use Windows-based user interfaces.

Integration with Microsoft Word, Microsoft Excel and Adobe Acrobat Reader is supported.

# STINGA ISDN BA      PROTOCOL ANALYSIS

## TECHNICAL SPECIFICATIONS

### Hardware & Software Requirements

- ◆ Software modules running on Windows Vista/XP/2000.
- ◆ PIST-ISDN-BRI USB for connection to the S-bus.

### Protocols Supported

- ◆ DSS1 Layer 1, INFO 0 to 4
- ◆ DSS1 layer 2 (Q.921/I.441)
- ◆ Euro-ISDN layer 2, LAPD, LAPDE, LAPB, LAPBE
- ◆ DSS1 layer 3 (Q.931/I.451)
- ◆ Euro-ISDN layer 3 (Q.931/I.451)
- ◆ X.25 (B and D channel, layer 3)
- ◆ Layer 6 and 7, ASN.1 (Supplementary Services)
- ◆ PPP, IPX and IP in B channel
- ◆ Other protocols and national protocol variants are implemented on customer requests.

### Cables

Cables included with the ISDN BA test instruments:

- ◆ Cable for connection to the ISDN S-bus (RJ45 connectors).

### Related Products

- ◆ STINGA BICC Monitor & Simulator
- ◆ STINGA DPNSS/DASS2 Monitor
- ◆ STINGA IRI Analyser
- ◆ STINGA ISDN PRA Monitor & Simulator
- ◆ STINGA MOBILE Monitor
- ◆ STINGA NGN Monitor
- ◆ STINGA SCTP Simulator
- ◆ STINGA SIP Simulator
- ◆ STINGA SS7 Monitor & Simulator
- ◆ STINGA V5 Monitor & Simulator
- ◆ E1/T1/J1 support for Wireshark (Ethereal)

Note: The **BICC** products includes all the functionality of the SS7 products, in addition to support for the BICC protocol. The SS7 test instruments can easily be upgraded to the BICC products.

### Manufacturer

Utel Systems AS  
Televeien 9, NO-4879 Grimstad, Norway  
Main Office: Tel: +47 3704 6192 • Fax: +47 3704 6191  
Internet: [www.utelsystems.com](http://www.utelsystems.com)  
E-mail: [sales@utelsystems.com](mailto:sales@utelsystems.com)

### Distributor

Please contact us for information about your local distributor.  
A distributor overview is also available at our web site.



**Your customers will notice**